

MULTI-FAMILY SECURITY

YARDI® SYSTEM INTEGRATIONS



Improved & Modernized Security System

Eliminates Double-Data & Multiple Form Entries

Up-to-Date Resident Information

Kastle has a direct access control software integration with the Yardi® Voyager property management platform which enables Yardi Voyager clients to use the initial Yardi data as the authoritative identity source for resident data across other critical community systems including access control and smart locks.

Access privileges and credentials activate and deactivate automatically based on the information managed in Voyager. Kastle's integration reduces redundant data entry of resident records and eliminates security breaches by automatically revoking a renter's property access the moment their lease is terminated in the Yardi database.



LEASING OFFICE

Kastle uses Yardi Voyager lease information for access privileges, eliminating the need for multiple data entries.



NEW TENANTS

Lease activation for unit access, parking, property gates, and amenities.



VEHICLES & PARKING

Resident access is activated at enrollment.



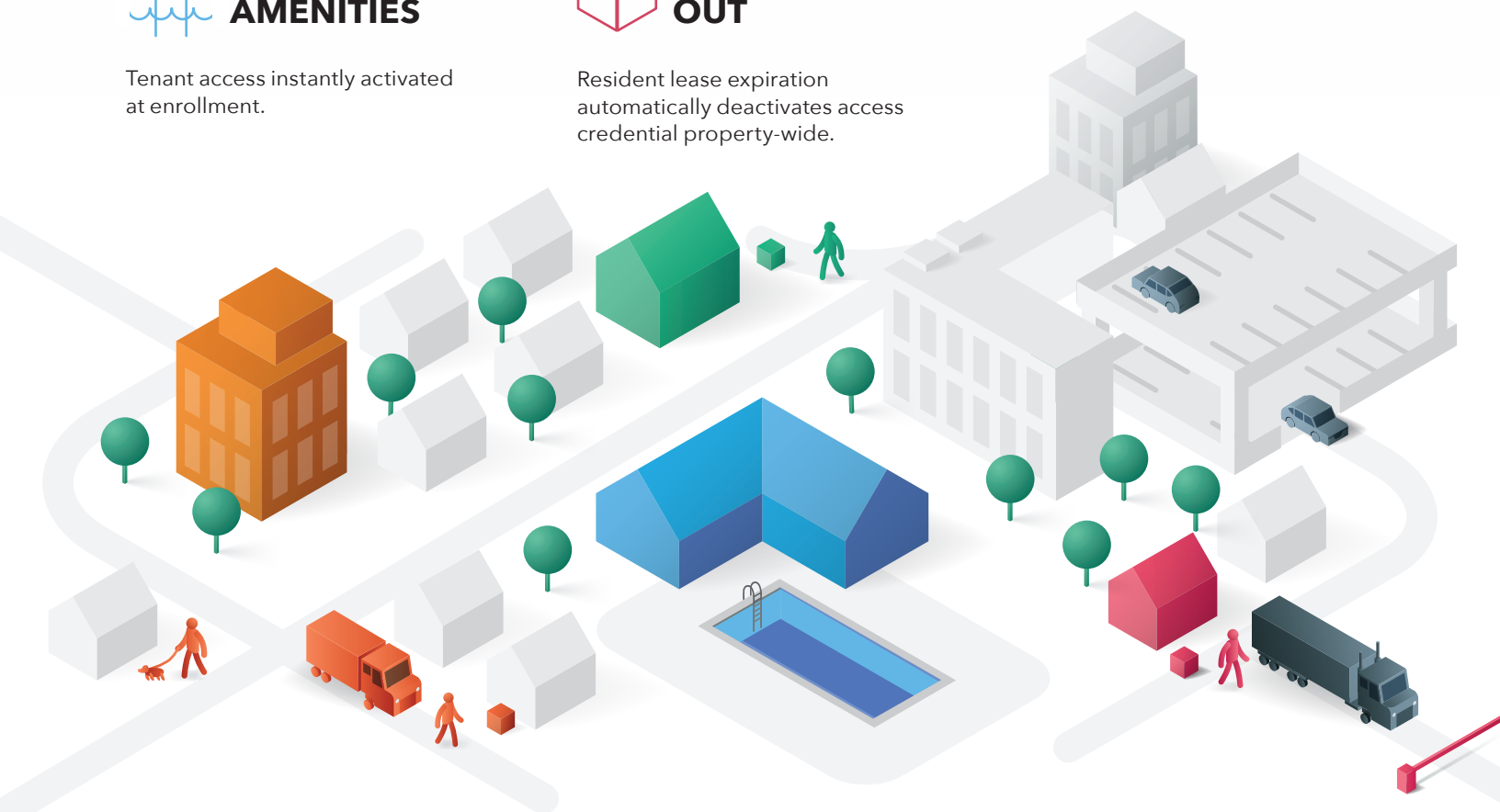
COMMUNITY AMENITIES

Tenant access instantly activated at enrollment.



MOVE OUT

Resident lease expiration automatically deactivates access credential property-wide.



KASTLE

kastle.com 855.527.8531 info@kastle.com